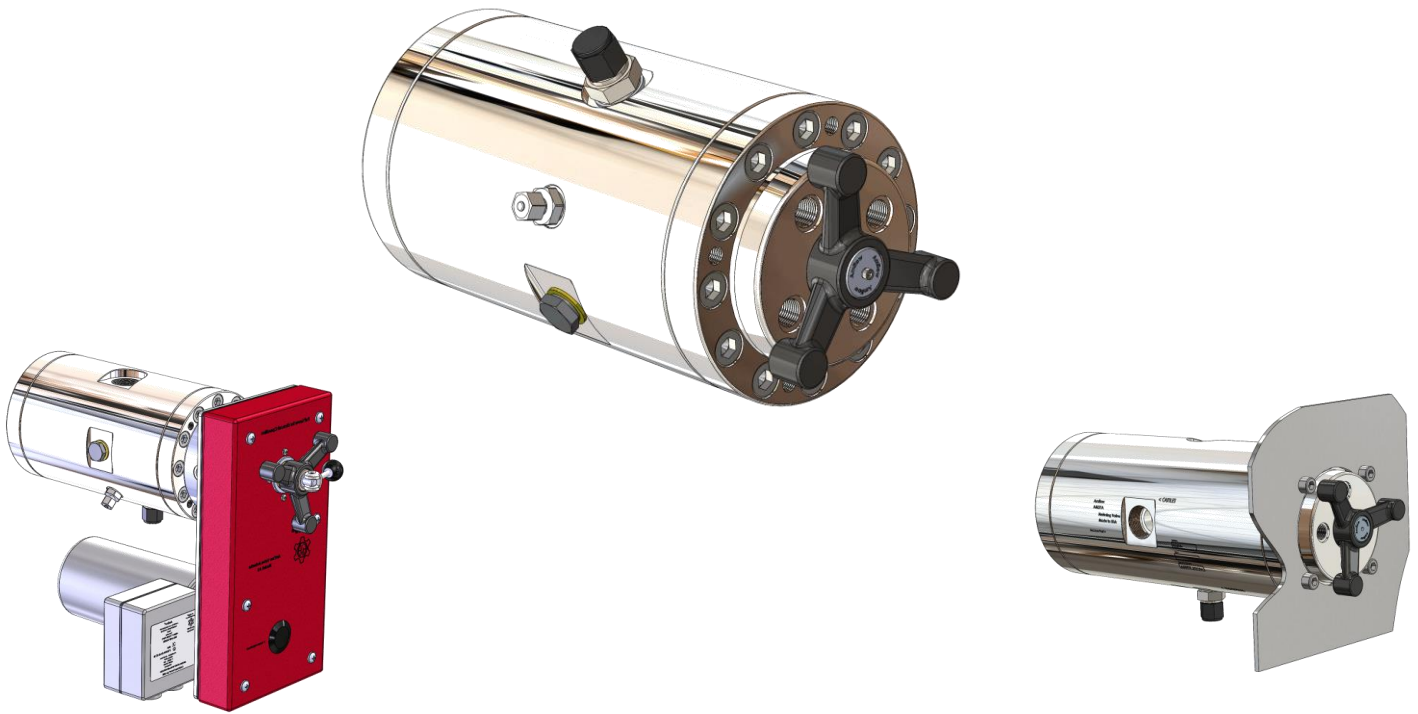




TECHNICAL DATA SHEET

AMFLOW® AM37A **FLOW CONTROL VALVE**



Part Number: 5000-05

(Reference Ordering Guide on page 6 for part number options)

Standards and Patents:

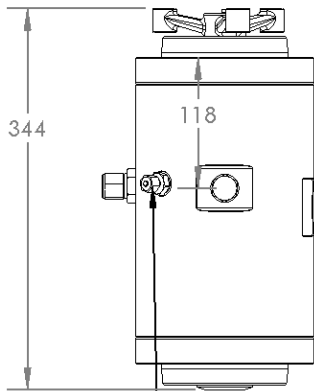
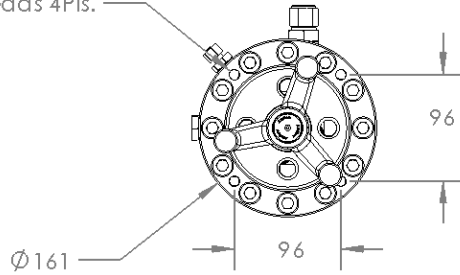
Material traceability certificates, post processes, and As-Built documents shall be maintained on file with **Amflow®** for a period of not less than TEN years.

| | |
|--------------------------------------------------|-----------------------------------------------|
| ATEX DIRECTIVE 2014/34/EU | |
| CE 0891 | Ex II 2G Ex h T6 |
| PED 2014/68 EU | SEP CATEGORY II MODULES A, D1 & E1 |
| US PATENTS 5427139 * 5494070 * 6189564 B1 | EU PATENT 1110132 |

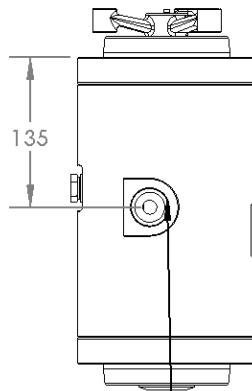
Amflow® reserves the right to amend or change specifications without prior notice



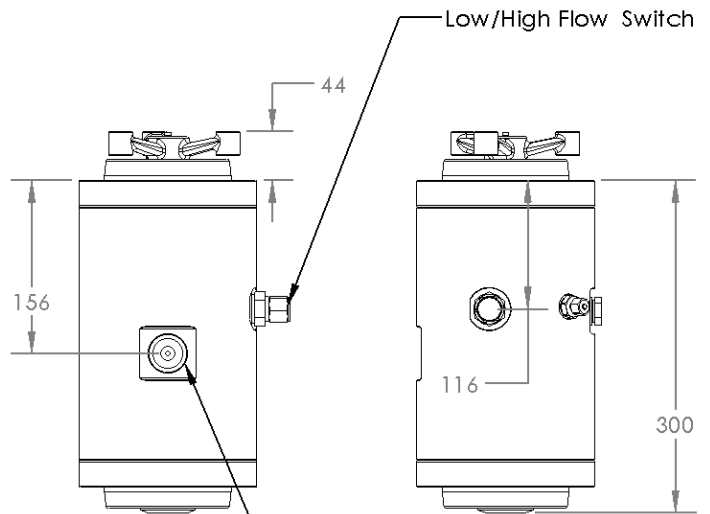
M10 mounting threads 4Pls.



Purge Port
1/4 BSPP

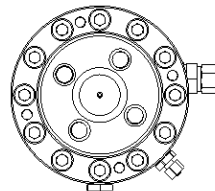


Inlet Port
1" BSPP or 1" NPT



Low/High Flow Switch

Outlet Port
1" BSPP or 1" NPT



STANDARD 1" BSPP PORT LOCATION & CONFIGURATION
 OPTIONAL 1" FNPT ARE LOCATED IDENTICAL TO 1" BSPP

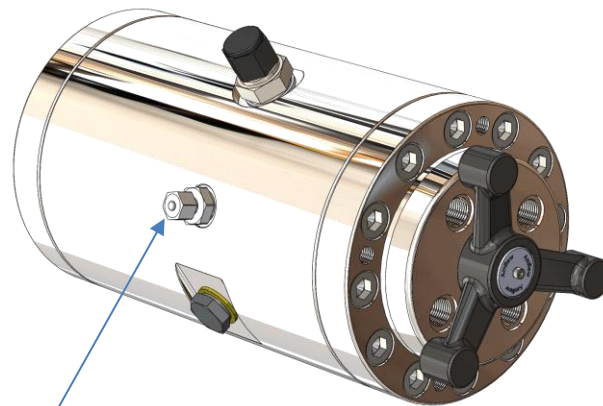


Design Features:

- Pressure independent on the downstream side
- Pressure Vessel Materials of Construction: Standard is 316/316L Stainless Steel & Titanium (6AL-6V-2Sn)
- Wetted Materials of Construction: 316/316L & Titanium (6AL-4V) & (6AL-6V-2Sn)
- Operating Pressure: 20 bar (300 psi) to 414 bar (6,000 psi)
- **Inlet pressure must be stable (+/- 3%) for proper valve operation**
- Pressure drop across the AM37A valve is 3 bar (43 PSI)
- Ambient Operating Temperature: -15°C (5°F) to 232°C (450°F)
- Standard Inlet & Outlet Ports: 1" FBSPP or FNPT
- Purge Port: 1/4" FBSPP
- Turndown Ratio: Up To 15:1
- Weight: 44.5kg (98 lbs.)
- Ceramic pins & seats for wear resistance
- Standard wetted Seals are NBR & PTFE
- FFKM Seals are optional
- Low maintenance
- Very low torque is required for flow rate adjustment. Easy hand operation of flow adjustment knob

Purge Port:

Incorporated into the **Amflow**® AM37A Flow Control Valve is a purge port that allows the user to direct a high flow stream of chemical across the fixed orifice to flush any chemical residue that might accumulate over time. This feature reduces the necessity of opening the valve and cleaning the orifices manually.



Purge Port
1/4" Tube Connection

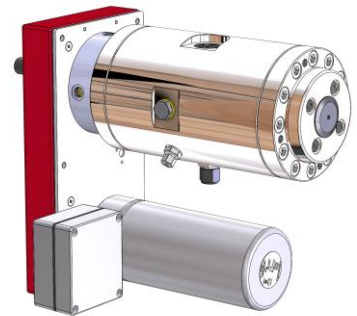
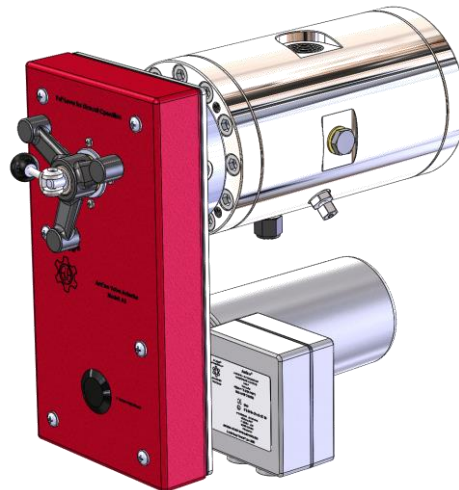


PANEL MOUNTING & AUTOMATED OPTIONS

Panel Mount Dimensions



ATEX/IECEx Actuated Options



AM37A
Shown with
Amflow® A3 ATEX/IECEx Certified
24 VDC Actuator with local manual control



| 1. FLOW RATES | | |
|-------------------------------------------------------------------------------------------------------------------------------------------------------------------|------------------------------------|-------------------------------------------------------|
| 1.01 Flow rate range * | MINIMUM: 90 LPH | MAXIMUM: 3,000 LPH |
| 1.02 Operating pressure range – 316L** | MINIMUM: 20 bar (300 PSI) | MAXIMUM: 414 bar (6,000 PSI) |
| 1.03 Operating pressure range – 17-4 PH SS ** | MINIMUM: 20 bar (300 PSI) | MAXIMUM: 690 bar (10,000 PSI) |
| 1.04 Operating pressure range – Titanium** | MINIMUM: 20 bar (300 PSI) | MAXIMUM: 800 bar (11,600 PSI) |
| 1.05 Hydrostatic pressure test – 316L | 620 bar (9,000 PSI) | |
| 1.06 Hydrostatic pressure test – 17-4 PH SS | 1,034 bar (15,000 PSI) | |
| 1.07 Hydrostatic pressure test – Titanium | 1,200 bar (17,400 PSI) | |
| 1.08 Pressure drop ΔP across the valve | MINIMUM: 3 bar (44 PSI) | |
| 1.09 Ambient operating temperature | MINIMUM: -15°C (5°F) | MAXIMUM: 232°C (450°F) |
| 2. TURNDOWN RATIO *** | Up to 15:1 | |
| 3. ACCURACY & REPEATABILITY | ± 3% | |
| 4. PORT CONFIGURATION | Standard Inlet/Outlet Ports | Standard Purge Ports |
| 4.01 Positioned as shown on picture | 1" FBSPP or FNPT | 1/4" FBSPP |
| 5. CONSTRUCTION MATERIALS | Standard Material | Special Order |
| 5.01 Pressure vessel & external parts | 316/316L & Titanium (6AL-6V-2Sn) | Duplex 2205, Super Duplex 2507, 17-4 PH SS & Titanium |
| 5.02 Standard wetted seals | NBR & PTFE | FFKM & PTFE |
| 5.03 Non-Wetted Seals | Viton | Contact Amflow® |
| 6. NOISE | Decibels | |
| 6.01 | Less than 70 dB | |
| 7. DIMENSIONS | Metric | Imperial |
| 7.01 Height (overall) | 344 mm | 13.54 in. |
| 7.02 Diameter (main body) | 161 mm | 6.34 in. |
| 8. WEIGHT | Metric | Imperial |
| 8.01 | 44.5 kg | 98 lbs |
| 9. PANEL MOUNT REQUIREMENTS | Metric | Imperial |
| 9.00 Maximum Panel Thickness | 7 mm | 0.28 in. |
| 9.01 Mounting Hole Diameter | 56 mm | 2.25 in. |
| 9.02 Mounting hardware (SHCS) | M10 x 1.50 | N/A |
| NOTES: | | |
| FLOW RATE: | | |
| * Depends on characteristics of media. | | |
| ** Operating Pressure: Minimum & Maximum recommended inlet pressure supplied by pump to valve. Inlet pressure must be stable (+/- 3%) for proper valve operation. | | |
| TURNDOWN RATIO: | | |
| *** Turndown ratio can vary dependent upon chemical composition, flow rate, and Δp. | | |
| FILTRATION: | | |
| Filtration to 300 Micron is recommended using Amflow® Simplex Filter products. | | |



Amflow® A&H Enterprises Inc.
World Headquarters

11812 NE 116th St.
Kirkland Washington U.S.A.
98034

Tel: +1.425.883.4040
Fax: +1.425.823.1962
E-Mail: ah@amflow.com



Amflow Norge As
Representing:

Norway, Denmark, Germany, Italy, Sweden, Middle East, United Kingdom & The Netherlands

Prinsens Vei 12
4315 Sandnes, Norway

Tel: +47.922.19.656
Fax: +47.520.00.591
E-Mail: lep@amflow.no



Amflow Controls Asia SDN. BHD.
Representing:

Malaysia, India, Indonesia, Singapore, Thailand & Vietnam

No. 9 Jalan 11/12 46200 Petaling Jaya
Selangor, Malaysia

Tel: +60.12.3323.118
E-Mail: amflowcontrols@gmail.com



Sudiflow Integrated Services, LTD.
Representing:

Nigeria, Angola, Benin, Cameroon, Equatorial Guinea, Gabon, Ghana & Togo

25 Elemenwo Road
Port Harcourt, Nigeria

Tel: +234.803.309.1405
Tel: +234.805.201.2252
E-Mail: sudiflow@yahoo.com
E-Mail: etimbukfrank.sudiflow@yahoo.com

